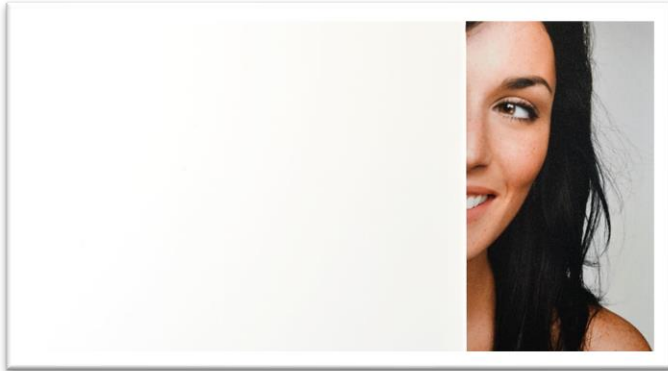


## SOLYX® Glass Finishes SXF-0600 Snow White Light Diffuser



### Product Description

SOLYX® SXF-0600 Snow White Light Diffuser is a white, translucent, polymeric vinyl film designed to give an even light transmission/distribution for backlit applications. It provides obscured visibility and very little light transmission.

### Specifications

Product Code	SXF-0600
Product Family	Frosted
Film Type	Polymeric Vinyl
Adhesive Type	Pressure-Sensitive
Usage	Interior or Exterior
Available Width(s)	60" (1524mm)
Full Roll Length	100 linear feet (30.5m)
Thickness	3 mil
Shading Coefficient	0.41
Visible Light Reflection	3%
Visible Light Transmission	2%
UV Transmission	0%
Solar Heat Rejected	46%
Solar energy absorbed	31%
Infra-Red Transmission	3%

### Product Construction

#### Face Film

3 mil Vinyl

#### Adhesive

Solvent-Based Clear Acrylic, Pressure-Sensitive

#### Release Liner

1.5 mil Polyester

### Product Details

SOLYX® SXF-0600 Snow White Light Diffuser is a white, translucent, polymeric vinyl film designed to give an even light transmission/distribution for backlit applications. It is ideal for privacy, decorative, or architectural applications including shop windows, glass doors, and backlit signage.

**NOTE:** Application environments and certain surfaces such as vinyl, glass, acrylic, styrene, and polycarbonate can cause increased adhesion and adhesive transfer. We recommend that all surfaces be tested for compatibility and removability.

### Flammability Rating

This product meets ASTM E84 and is classified as Class A as defined in NFPA 101, Life Safety Code®.

### LEED Credit EQ 4.1 Low Emitting Materials, Adhesives & Sealants

This product has zero VOC content according to 40 CFR 59, Subpart D (EPA method 24).

### Durability

OUTDOOR: 2-5 years based on vertical exposure and depending on magnitude of UV exposure

INDOOR: 10 years

WET ENVIRONMENT: suitable for wet environments 24 hours after the installation has been completed

### Installation and Warranty

#### Installation

Installation should be in accordance with the manufacturer's installation instructions. This film is applied using the same tools and techniques used for installing window tinting films.

#### Warranty

This SOLYX® product will be free from defects in material and manufacture for a period of five (5) years from the date of installation. Exterior applications have a three (3) year warranty. See warranty information for specific details.

### Product Distribution and Contact Information

#### Distribution

SOLYX® Decorative Films are available through authorized Installing Dealers, Distributors, or directly from Decorative Films, LLC.

Samples submitted upon request.

#### Contact Information

Decorative Films, LLC

1-888-657-5224

[www.decorativefilm.com](http://www.decorativefilm.com)